

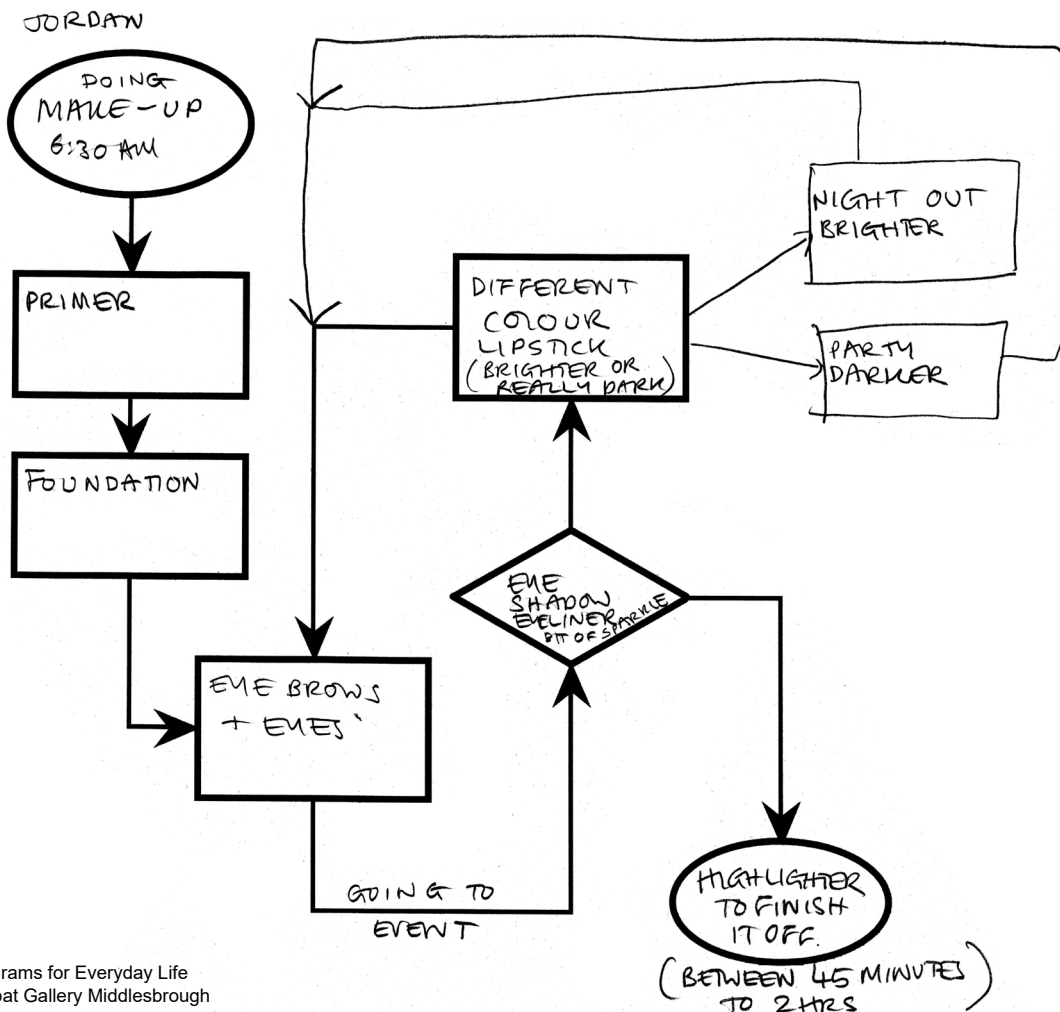
Helen Stratford is a socially engaged artist with a background in architecture. Working with performative workshops, site-specific interventions, video, speculative writing and discursive platforms, her practice searches for modalities that expand architectural conventions. Her work has been presented at Yorkshire Sculpture Park, g39, Oriol Davies Gallery: Wales; Wysing Arts Centre, Cambridge Junction: Cambridge; RIBA, Tate Modern, ICA, National Theatre: London, Akademie Solitude: Stuttgart; Center for Contemporary Arts: Celje; Škuc Gallery, P74: Ljubljana. She recently launched her artists' book 'The Day of the Duck' with artist Lawrence Bradby, published with Marmalade, and was a selected artist for Oslo Architecture Triennale 2019: Enough! the architecture of degrowth.

Education / Training

- 2012-2020 **Part-time practice-led PhD in Performative Architectures** University of Sheffield
- 2003 **RIBA PART III** University of Cambridge
- 1998-02 **MA Architecture and Critical Theory, Distinction** University of Nottingham
- 1996-98 **RIBA PART II / Diploma in Architecture,** University of Cambridge
- 1991-94 **RIBA PART I / BA Hons. Architecture,** University of Sheffield

Selected Solo Exhibitions & Installations

- 2019 **The Productive Life Room** Art Bnb Blackpool
Real Estate Micro Residency Billboard Leftcoast Blackpool
The Day of The Duck exhibition RIBA Bookshop London
- 2018 **Transitions** 17 Saabat Gallery, Middlesbrough
- 2017 **The Remote Lab** residency & online artwork Fermynwoods Contemporary Art, Northamptonshire
- 2016 **The Drawing Room** 3-day residency and gallery installation Oriol Davies Gallery, Newtown, Wales
- 2015 **Demolition Mood Board** Exchange Place Studios, Yorkshire Artspace, Sheffield
The First International Survey On Bird Deterrence: Sheffield, The World Outside SIA, Sheffield
- 2014 **Market Meditations** solo show, Celje Center for Contemporary Arts (SI)
Things To Do With Shopping Centres solo installation, Smiths Row Gallery, Bury St Edmunds.
- 2012 **A Day With A Duck** solo curated gallery presentation, Babylon Gallery Ely
- 2005 **Displacings** exhibition, Akademie Schloss Solitude, Stuttgart (DE)
- 2004 **Extended Thresholds** one-day taxi residency followed by 6 week solo installation



Doing Make-Up
Organisational Diagrams for Everyday Life
Transitions 17 Saabat Gallery Middlesbrough

LINKS

Selected Group Exhibitions & Installations

- 2020 **Bloc Projects Members Show** Bloc Projects, Sheffield
- 2019 **The Cambridge Show** Kettle's Yard Gallery, Cambridge
Oslo Architecture Triennale Organisational Diagrams For Everyday Life
- 2017 **Play Cambridge Now Or Never!** installation/interactive app, with Idit Nathan and Cambridge Junction
Nasty Women Cambridge Artspace, Cambridge
- 2016 **Imaginary Worlds** Oriol Davies Gallery, Newtown
Europa Shop Show Transition Gallery, London
Bloc Billboard Commission with Craig Fisher, Sheffield Bloc Projects
UNIT(e) 2016 group show g39 Gallery Cardiff
- 2015 **The Reading Room** artists book show & **One Place After Another** Cambridge Artspace
Drawing Conversations with Craig Fisher, Coventry University
I'M Ten group show and auction, IMT Gallery, London
Variety Show I and XIII Primary Studios Nottingham and Aid & Abet, Cambridge
- 2014 **JUST LIKE THIS** annual online project Fermynwoods Contemporary Art
The Walking Encyclopaedia group show, with Idit Nathan AirSpace Gallery, Stoke-on-Trent
- 2013 **Eastern Approaches** open group show, UH galleries at Museum of St Albans
The Air of Songs group show, Celje Centre for Contemporary Arts (SI)
A State of Unplay group show, Atelier 35, Bucharest, (RO)
- 2012 **Please Wait To Be Served (How to Perform a Café)** visual arts commission Hunt&Darton Cafe
Intervals Film Screening at Hotbed, The Cambridge New Writing Theatre Festival
- 2011 **Please Wait Here: Instructions for performing a queue for a pleasure pier train** Artside: Southend
Manchester Blind Spots Film screening at Exhibition, Cambridge, Film Festival & Conference:
MIRROR/LENS: WOMEN IN FILM & WOMEN MAKING FILM, Murray Edwards College,
- 2010 **CUBEOpen 2010 Manchester Blind Spots** with Diana Wesser Manchester CUBE Gallery
Wysing Arts Contemporary: Partnering group show with Diana Wesser
- 2009 **Communities Under Construction** group show, Wysing Arts Centre, Cambridge

Selected Solo Performative Tours Walks & Actions

- 2018 **A Lexicon of Gestures For Everyday Public Life** public engagement commission for Commission Projects in connection with 'Corpus' by Dalziel and Scullion, Capella Biomedical Campus, Cambridge.
Vsakogaršnja emlja Participatory Workshop Commission iwith Kud Obrat Ljubljana (SL)
- 2015 **Perimeter Perambulations** Queen's Park, Loughborough, RADAR
Flora & Fauna Tours Castlegate Festival, Sheffield, Yorkshire Artspace
- 2014 **Mechanisms of Control** participatory workshop for CRAASH conference, Cambridge University
Things To Do With Shopping Centres public event, Cornhill Walk, Bury St Edmunds
- 2013 **An Architectural Cleaning Cupboard Tour** Cambridge Junction: Unfinished & Unleashed
- 2012 **Practising Firstsite: 10 ways to Misuse a Visual Arts Centre** performative tour, Firstsite Colchester
- 2011 **Approaching Art** performative tour Camberwell School of Art, commission
- 2008 **In-between House & Home** performative lecture walk, Arts Theatre, Cambridge Festival of Ideas
- 2006 **In-between House and Home** performative lecture "A Question(ing) of Gesture" Leipzig Opera House

Selected Collaborative Performative Tours Walks & Actions

- 2017 **Play Cambridge Now or Never!** WATCHOUT Festival, Cambridge with Idit Nathan
- 2016/17 **Lightbulb Walks** National Theatre, London with Idit Nathan
Play The City Now or Never! CounterPlay 16 Aarhus (DK) with Idit Nathan
- 2015 **Play Welcome Now or Never!** Welcome Trust Play Spectacular London with Idit Nathan
- 2014 **Play Cambridge Now or Never!** Curating Cambridge with Idit Nathan
- 2013 **Sunder & Land** performative walk, with Idit Nathan On Walking Sunderland University & NGCA
- 2012 **Time to C&B** performative tour with Idit Nathan, CB1, Cambridge Curiosity & Imagination & Aid&Abet
- 2011 **Choreographing Knowledge** with Diana Wesser: Murray Edwards, Cambridge Festival of Ideas
Walking Through Walls audio walk-for-one with Diana Wesser: Stadttheater Bremerhaven (DE)
Intervals audio-walk, with Diana Wesser: Metropolis Biennale, www.cph-metropolis.dk/en (DK)
- 2010 **Walking Through Walls** audio walk-for-one, Centraltheater Leipzig play! LEIPZIG Festival (DE)
- 2009 **Choreographing Knowledge** performative walk and talk with Diana Wesser:
Murray Edwards College, Nightjar festival & Festival of Ideas, University of Cambridge
Fissures in the Harbour of Knowledge lecture performance walk with Diana Wesser:
TANZ MACHT RAUM _ RAUM MACHT TANZ, Symposium, Ruhr University Bochum (DE)
Home is where the piano is CROP MARKS contemporary art trail, with Diana Wesser, Cambridge
- 2008 **Manchester Blind Spots** performance lecture walk, Get Lost! Festival, TRIP conference MMU

Selected Event Curation / Organisation

- 2019 **If Artists Built The World** symposium facilitation, Peterborough Presents
- 2016 **Interstitial Breakfast** with taking place, AHRA Architecture & Feminisms conference KTH Stockholm
Hands On workshop with Apolonija Šušteršič, Oslo National Academy for the Arts
- 2013 **Liberty Belle: Floating Micro Cinema** with Cambridge Super8, Ely
- 2012 **A Day With A Duck** live art events, Ely
- 2011 **Performative Architectures** discussion event the Showroom, London
- 2008 **Feminism is on the Agenda*** Public works ICA, London, Nought to Sixty Salon with taking place. CV2

Selected Performative Lectures

- 2018/19 **The Day of the Duck** book launch with Lawrence Bradby, Babylon Gallery Ely, RIBA Bookshop London
- 2016 / 17 **Was (is) taking place a nomadic practice?** with Teresa Hoskyns AHRA Architecture & Feminisms conference KTH Stockholm and The Nordic Geographers Conference (SE)
- 2016 **A Day With A Duck** Pecha Kucha at Walking Women Forest Fringe, Edinburgh
- 2015 **Market Meditations Plank** Techniques of Art & Protest, Kings College, London
- 2014 **Market Meditations P74 Gallery** Ljubljana (SI)
Performing Cities: "Occupy" and Playgrounds presentation at CRAASH, Cambridge
Play the City Now or Never! with Idit Nathan METAL, Peterborough.
- 2013 **Play the City Now or Never!** with Idit Nathan Futurepark METAL Southend-on-Sea
- 2013 **Mechanical Operations** flip-chart presentation with Lawrence Bradby, Cambridge Junction
- 2012 **Beacon Bi-Monthly 12** Beacon Art Projects, Lincoln
Gestures of Resistance AHRA 2012 9th International Conference
- 2011 **Walking Through Walls** performative lecture PSI#17 Utrecht - Camillo 2.0
- 2010 **Routine Procedures** Sexuate Subjects, interdisciplinary event UCL, London
Urban (col)laboratory with Diana Wesser, Metropolis Lab, Copenhagen (DK)
- 2009 **Not Building** Škuc Gallery, Ljubljana (SI)
Mechanical Operations in Cambourne book launch with Lawrence Bradby, ICA London
- 2007 **Form Trans Inform:** with Doina Petrescu, Sheffield University, Alternate Currents Symposium

Residencies / Research Projects / Professional Development

- 2019 **Real Estate Micro Residency** Leftcoast Blackpool
- 2018-20 **Between the Gallery and the Park** Yorkshire Sculpture Park and Furtherfield Gallery
- 2018 **Transitions17** Saabat Gallery, Middlesbrough
- 2017-18 **Walk & Play YSP!** Yorkshire Sculpture Park with Idit Nathan
The Remote Lab Fermynwoods Contemporary Art, Northamptonshire
- 2016-17 **Fantastical Cambridgeshire** Cambridge Curiosity and Imagination
- 2016 **The Drawing Room** 3-day residency, Oriel Davies Gallery, Newtown, Wales
- 2015-16 **Play the City Now or Never! METAL** 2 year residency METAL with Idit Nathan
- 2016 **UNIT(e) g39** 10 week development residency/intensive g39 Cardiff Wales
- 2015 **How to Re-Make A City** residency with demolition workers, Sheffield, Yorkshire Artspace
MSB2015 three-part residency exchange: Castlefield Manchester, Bloc Sheffield, ESP Birmingham
- 2014 **AA2A** 8 month residency, Sheffield Hallam University
- 2013 **Time & Space METAL** 1 month residency Peterborough with Idit Nathan
Birdland is Everywhere - 6 month residency - Poly-Technic, Soar Works, Sheffield
AIR Celeia - 2 month residency - The Centre for Contemporary Art, Celje Slovenia
METAL Culture Lab, Peterborough, 1 week residency with Idit Nathan
- 2012 **A Day With A Duck** - 6-month residency and gallery presentation, Babylon Gallery, Ely
- 2012 **Mentoring Session** - with Caroline Wright, New Work Network
- 2011-12 **Performative Architectures** - ACE funded practice development via Escalator Live Art
- 2007-12 **taking place 6:** The Other Side of Waiting: Routine Procedures curated public arts project, Homerton Hospital Hackney, London, www.takingplace.org.uk
- 2009-2015 **Studio Artist** Wysing Arts Centre, Cambridge
- 2009 **Communities Under Construction** 6-month residency, Wysing Arts Centre, Cambridge
- 2004/5 **Architecture Fellowship** 9-month residency, Akademie Schloss Solitude, Stuttgart, Germany

Publications

Books

- 2018 **The Day Of The Duck** with Lawrence Bradby, Marmalade London
- 2009 **Mechanical Operations in Cambourne** with Lawrence Bradby, Marmalade London

Chapters

- 2020 **forthcoming: The Space(s) Between Us** collaborative chapter with Diana Wesser in *Odyssee : Heimat*, Natalie Driemeyer and Jan Deck eds. Transcript Verlag, Bielefeld
- 2016 **Market Meditations in Demystifying Architectural Research** Prof Flora Samuel and Anne Dye eds. RIBA Publishing
- 2010 **In Between House and Home** in *Verhaktene Beredsamkeit? Politik, Pathos und Philosophie der Geste*, Veronika Darian ed., Peter Lang, Frankfurt am Main.
- 2007 **Micro-Strategies** in *Altering Practices: Feminist Politics and Poetics of Space* Doina Petrescu ed., Routledge, London
- 2006 **Unpleasant Matters** in *Material Matters: Materiality in Contemporary Architectural Practice and Theory* Katie Lloyd-Thomas ed., Routledge, London

Articles

- 2017 **Was (is) taking place a nomadic practice?** with Teresa Hoskyns in *Architecture Feminisms Theory & Culture* journal issue 5 2017
- 2008 **Form Trans Inform: the 'poetic' resistance in architecture** with Doina Petrescu and Constantin Petcou, ARQ Vol. 12/2
- 2002 **Micro-Strategies of Resistance** RFR Journal of Feminist Research, Fall/Winter
- 2001 **Enclaves Of Expression:** Journal of Architectural Education MIT (Los Angeles)

Publications (cont.)

Artists Pages

- 2016 **A Dialogue between Art & Protest**, PLANK Technique of Art & Protest Zine
- 2015 **Play The City Now Or Never!** in Ways to Wander Claire Hind & Clare Qualmann Triarchy Press
- 2013 **U-Spy Deterrent Survey** in Paper Stages book www.paperstages.co.uk
Believers walk right in and take your seat in Artists Cookbook, New Work Network
Walking Through Walls in publication of the festival 'play!LEIPZIG (Dance Archive Leipzig)
Fissures in the Harbour of Knowledge (Ed. Ruhr University Bochum)
- 2010 **Mechanical Operations: Repetitive Actions as a Creative Force in New English Settlements** in Surface, YH485 Press, www.YH485press.org with Lawrence Bradby
- 2008 **In Between House and Home "A question(ing) of gesture"** Fotohof edition catalogue

Consultancy, Workshops, Professional architectural practice and Teaching

- 2018 **Writing Practice workshop** Oslo National Academy for the Arts Norway
Organisational Diagrams For Everyday Lives Of Socially Engaged Artists
Social Art Summit Sheffield Site Gallery
How is Public Space Performed? Workshop Floating University Berlin for Raumlabor
Wild Learning: Alterlives workshop for Fermynwoods Contemporary Art
- 2017/18 **Design Tutor PGT MA in Urban Design and MA in Architectural Design**
Sheffield School of Architecture
- 2016-2020 **External Examiner - Edinburgh Edinburgh School of Architecture & Landscape**
Architecture MSc in Architectural and Urban Design
- 2016 **Oslo National Academy for the Arts** Norway, 'Hands On' MA in Art and Public Space
Smiths Row Bury St Edmunds - consultant artist for studio development
- 2013-2015 **Design Tutor - Studio Tutor, MArch / PGT MA Architecture & Urban Design**
Sheffield School of Architecture
- 2013 - current **Cambridge Curiosity and Imagination** Trustee www.cambridgecandi.org.uk
- 2005-2014 **MOLE Architects Ltd. Ely (part-time)** Architect
- 2012-13 **Children Take The Lead** with Cambridge Curiosity and Imagination
- 2011 **Wysing Arts Centre** Young Artists Retreat Workshop with artist Rachael Barker,
Kettles Yard Cambridge Contemporary Art Family Workshops, Kettles Yard, Cambridge
- 2008 **Arts Council England Creative Partnerships** Enquiry Schools commission
with artists Townley & Bradby, Bradfield Primary School, Manningtree
- 2007 **Arts Council England Creative Partnerships** From Little Seeds: commission
with artist Sally Brown, Leicester Imperial Avenue Infants and Leicester City Gallery
- 2006 **General Public Agency**, London, Creative Consultant: Aldegate Public Realm Strategy,
- 2005/6 **Arts Council England Creative Partnerships** Creative Constructions: commission,
Ravenscroft Infants, Clacton On Sea
Shape East/Arts Council England Creative Partnerships Talk about Tomorrow:
commission, with artist Sally Brown, Spring Meadow Primary School, Harwich
- 2003/04 **Cambridge/Tate Modern**, Inspire: Immersive Learning Project, www.accessart.org.uk.
- 1999/00 **Winchester School of Art** lecturer 'Architecture and Society' BA Visual Arts
- 1999 - 2004 **5th Studio Architects Cambridge (part-time)** Architect

Prizes/Grants/Awards

- 2018 - 20 **Arts Council England ACE: Project Grant:** with Play Anywhere Now or Never for Between the Gallery and the Park, Yorkshire Sculpture Park / Furtherfield Gallery London
- 2015/16 **ACE: Grants for the Arts award:** with Idit Nathan for Play The City Now Or Never!
Yorkshire Artspace Microgrant: Flora and Fauna Tours, Castlegate, and Open Studios Sheffield
- 2014 **ACE/British Council: Artists International Development Fund** Round 6
- 2013 **RIBA LKE Ozolins PhD Studentship**
A-N Critical Writing Bursary to review b-side Festival Portland UK
A-N Go & See Venice Biennale Bursary
ACE selected Escalator Digital Arts artist (METAL Culture Lab)
- 2012 **University of Sheffield Faculty of Social Sciences PhD Fees Scholarship**
ACE Grants for the Arts award: A Day With a Duck, Babylon Gallery, Ely
- 2011 **ACE selected Escalator Live Art artist, ACE practice development Grants for the Arts.**
- 2010 **ACE selected Escalator Visual artist**
- 2008 **ACE Grants for the Arts award:** with taking place for The Other Side of Waiting
- 2007 **ACE Grants for the Arts Research & Development:** with taking place for The Other Side of Waiting