

Helen Stratford is a socially engaged artist and architect, writer, educator and researcher with a PhD in Architecture from the University of Sheffield, UK (2021). She developed her thesis 'Feminist Performative Architectures: making place in and with public space' through her interdisciplinary practice research, embracing art, architecture, ethnography, performance, and civic action, to expand notions of performativity, placemaking and participation in both architecture and urban design. Working with performative workshops, site-specific interventions, video, speculative writing, and discursive platforms, which often deploy humour and parody, her practice searches for modalities that expand architectural conventions to challenge spatial prejudices produced at the intersections of social, cultural, economic and political relations. Informed by her lived experience of chronic pain, she is currently exploring crip time (en)counters with public space

Her work has been developed, presented, performed, and exhibited at international residencies and platforms, including Oslo Architecture Triennale, Yorkshire Sculpture Park, g39 and Oriel Davies Gallery: Wales; Kettle's Yard, Wysing Arts Centre and Cambridge Junction: Cambridge; RIBA, Tate Modern, ICA and National Theatre: London, Akademie Solitude: Stuttgart; Centre for Contemporary Arts: Celje and Škuc Gallery, P74: Ljubljana. Her work is published in peer reviewed journals, alongside artists' books and pages. She is currently Senior Lecturer in Architecture at Sheffield Hallam University, Department of Architecture.

Education / Training

2012-2021 Part-time practice-led PhD in Performative Architectures University of Sheffield
2003 RIBA PART III University of Cambridge
1998-02 MA Architecture and Critical Theory, Distinction University of Nottingham
1996-98 RIBA PART II / Diploma in Architecture, University of Cambridge
1991-94 RIBA PART I / BA Hons. Architecture, University of Sheffield

Selected Solo Exhibitions & Installations

2019 The Productive Life Room Art Bnb Blackpool
Real Estate Micro Residency Billboard Leftcoast Blackpool
The Day of The Duck exhibition RIBA Bookshop London

2018 Transitions17 Saabat Gallery, Middlesbrough

2017 The Remote Lab residency & online artwork Fermynwoods Contemporary Art, Northamptonshire

2016 The Drawing Room 3-day residency and gallery installation Oriel Davies Gallery, Newtown, Wales

2015 Demolition Mood Board Exchange Place Studios, Yorkshire Artspace, Sheffield
The First International Survey On Bird Deterrence: Sheffield, The World Outside SIA, Sheffield

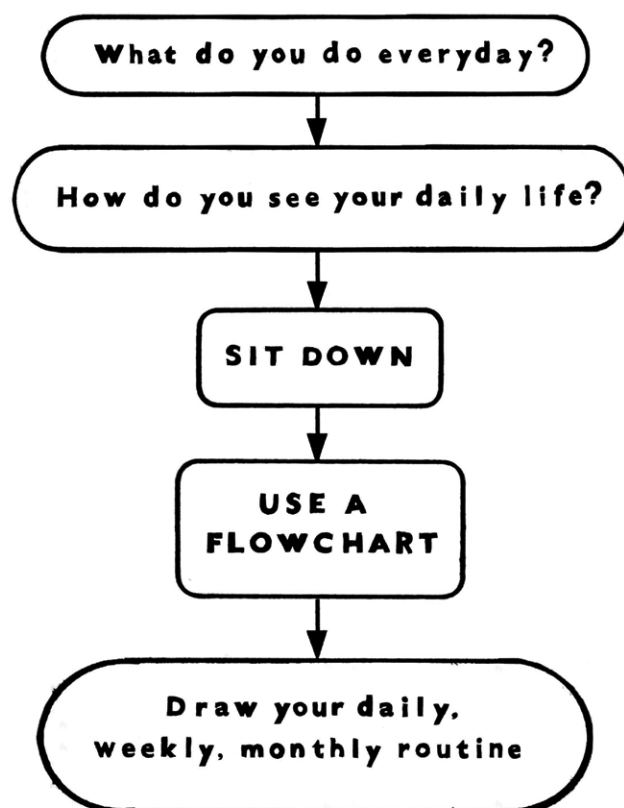
2014 Market Meditations solo show, Celje Center for Contemporary Arts (SI)
Things To Do With Shopping Centres solo installation, Smiths Row Gallery, Bury St Edmunds.

2012 A Day With A Duck solo curated gallery presentation, Babylon Gallery Ely

2005 Displacings exhibition, Akademie Schloss Solitude, Stuttgart (DE)

2004 Extended Thresholds one-day taxi residency followed by 6 week solo installation

Image
Organisational Diagrams for Everyday Life
2016 - ongoing



LINKS

www.playanywherenowornever.com
www.takingplace.org.uk
www.urbancollaboratory.net

Selected Group Exhibitions & Installations

- 2023 **Seats at the Table** Co-designing Equity in the Public Realm, London Festival of Architecture
- 2021 **Further Afield** permanent installation Yorkshire Sculpture Park
- 2020 **Bloc Projects Members Show** Bloc Projects, Sheffield
- 2019 **The Cambridge Show** Kettle's Yard Gallery, Cambridge
- Oslo Architecture Triennale** Organisational Diagrams For Everyday Life
- 2017 **Play Cambridge Now Or Never!** installation/interactive app, with Idit Nathan and Cambridge Junction
- Nasty Women** Cambridge Artspace, Cambridge
- 2016 **Imaginary Worlds** Oriel Davies Gallery, Newtown
- Europa Shop Show** Transition Gallery, London
- Bloc Billboard Commission** with Craig Fisher, Sheffield Bloc Projects
- UNIT(e)** 2016 group show g39 Gallery Cardiff
- The Reading Room** artists book show & **One Place After Another** Cambridge Artspace
- 2015 **Drawing Conversations** with Craig Fisher, Coventry University
- I'M Ten** group show and auction, IMT Gallery, London
- Variety Show I and XIII** Primary Studios Nottingham and Aid & Abet, Cambridge
- 2014 **JUST LIKE THIS** annual online project Fermynwoods Contemporary Art
- The Walking Encyclopaedia** group show, with Idit Nathan AirSpace Gallery, Stoke-on-Trent
- 2013 **Eastern Approaches** open group show, UH galleries at Museum of St Albans
- The Air of Songs** group show, Celje Centre for Contemporary Arts (SI)
- A State of Unplay** group show, Atelier 35, Bucharest, (RO)
- 2012 **Please Wait To Be Served (How to Perform a Café)** visual arts commission Hunt&Darton Cafe
- Intervals** Film Screening at Hotbed, The Cambridge New Writing Theatre Festival
- 2011 **Please Wait Here: Instructions for performing a queue for a pleasure pier train** Artside: Southend
- Manchester Blind Spots** Film screening at Exhibition, Cambridge, Film Festival: Murray Edwards
- 2010 **CUBEOpen 2010 Manchester Blind Spots** with Diana Wesser Manchester CUBE Gallery
- Wysing Arts Contemporary: Partnering** group show with Diana Wesser
- 2009 **Communities Under Construction** group show, Wysing Arts Centre, Cambridge

Selected Solo Performative Tours Walks & Actions

- 2018 **A Lexicon of Gestures For Everyday Public Life** public engagement commission for Commission Projects in connection with 'Corpus' by Dalziel and Scullion, Capella Biomedical Campus, Cambridge.
- Vsakogaršnja emlja** Participatory Workshop Commission iwith Kud Obrat Ljubljana (SL)
- 2015 **Perimeter Perambulations** Queen's Park, Loughborough, RADAR
- Flora & Fauna Tours** Castlegate Festival, Sheffield, Yorkshire Artspace
- 2014 **Mechanisms of Control** participatory workshop for CRAASH conference, Cambridge University
- Things To Do With Shopping Centres** public event, Cornhill Walk, Bury St Edmunds
- 2013 **An Architectural Cleaning Cupboard Tour** Cambridge Junction: Unfinished & Unleashed
- 2012 **Practising Firstsite: 10 ways to Misuse a Visual Arts Centre** performative tour, Firstsite Colchester
- 2011 **Approaching Art** performative tour Camberwell School of Art, commission
- 2008 **In-between House & Home** performative lecture walk, Arts Theatre, Cambridge Festival of Ideas
- 2006 **In-between House and Home** performative lecture "A Question(ing) of Gesture" Leipzig Opera House

Selected Collaborative Performative Actions

- 2023 **Resting Conversations**, Seats at the Table, London Festival of Architecture with Raquel Meseguer Zafe
- 2021 **Noticing the Unnoticed: a walk for Julia Dwyer** the Barbican London, with taking place
- 2017 **Play Cambridge Now or Never!** WATCHOUT Festival, Cambridge with Idit Nathan
- 2016/17 **Lightbulb Walks** National Theatre, London with Idit Nathan
- Play The City Now or Never!** CounterPlay 16 Aarhus (DK) with Idit Nathan
- 2015 **Play Welcome Now or Never!** Welcome Trust Play Spectacular London with Idit Nathan
- 2014 **Play Cambridge Now or Never!** Curating Cambridge with Idit Nathan
- 2013 **Sunder & Land** performative walk, with Idit Nathan On Walking Sunderland University & NGCA
- 2012 **Time to C&B** performative tour with Idit Nathan, CB1, Cambridge Curiosity & Imagination & Aid&Abet
- 2011 **Choreographing Knowledge** with Diana Wesser: Murray Edwards, Cambridge Festival of Ideas
- Walking Through Walls** audio walk-for-one with Diana Wesser: Stadttheater Bremerhaven (DE)
- Intervals** audio-walk, with Diana Wesser: Metropolis Biennale, www.cph-metropolis.dk/en (DK)
- 2010 **Walking Through Walls** audio walk-for-one, Centraltheater Leipzig play! LEIPZIG Festival (DE)
- 2009 **Choreographing Knowledge** performative walk w. Diana Wesser Nightjar Festival Cambridge University
- Fissures in the Harbour of Knowledge** lecture performance walk with Diana Wesser: TANZ MACHT RAUM _ RAUM MACHT TANZ, Symposium, Ruhr University Bochum (DE)
- Home is where the piano is** CROP MARKS contemporary art trail, with Diana Wesser, Cambridge
- 2008 **Manchester Blind Spots** performance lecture walk, Get Lost! Festival, TRIP conference MMU

Selected Event Curation / Organisation

- 2019 **If Artists Built The World** symposium facilitation, Peterborough Presents
- 2016 **Interstitial Breakfast** with taking place, AHRA Architecture & Feminisms conference KTH Stockholm
- Hands On** workshop with Apolonija Šušteršič, Oslo National Academy for the Arts
- 2013 **Liberty Belle: Floating Micro Cinema** with Cambridge Super8, Ely
- 2012 **A Day With A Duck** live art events, Ely
- 2011 **Performative Architectures** discussion event the Showroom, London
- 2008 **Feminism is on the Agenda*** Public works ICA, London, Nought to Sixty Salon with taking place.

Selected Performative Lectures

- 2023 **Public S/pacing: between architecture and crip time** Weaving Worlds conference, TU Delft
The DisOrdinary Architecture Project, invited workshop Royal Danish Academy, UIA World Congress
- Walking/Not Walking & Playing/Not Playing** Critical Performance On-Site, Dept of Theatre Arts TAU
- 2022 **A Day with A Duck** International Federation of Theatre Research, University of Iceland
- 2021 **Market Meditations** at City, Public Space & Body conference: Goldsmiths University of London.
- 2020 **Performative Architectures** Approaching Research conf (online) TU Munich, TU Delft KTH Stockholm
- 2020 **Organisational Diagrams for Everyday Life** participatory talk Abingdon Studios Blackpool (online)
- 2018/19 **The Day of the Duck** book launch with Lawrence Bradby, Babylon Gallery Ely, RIBA Bookshop London
- 2016/17 **Was (is) taking place a nomadic practice?** with Teresa Hoskyns AHRA Architecture & Feminisms conference KTH Stockholm and The Nordic Geographers Conference (SE)
- 2016 **A Day With A Duck** Pecha Kucha at Walking Women Forest Fringe, Edinburgh
- 2015 **Market Meditations Plank** Techniques of Art & Protest, Kings College, London
- 2014 **Market Meditations P74 Gallery** Ljubljana (SI)
Performing Cities: "Occupy" and Playgrounds presentation at CRAASH, Cambridge
Play the City Now or Never! with Idit Nathan METAL, Peterborough.
- 2013 **Play the City Now or Never!** with Idit Nathan Futurepark METAL Southend-on-Sea
- 2013 **Mechanical Operations** flip-chart presentation with Lawrence Bradby, Cambridge Junction
- 2012 **Beacon Bi-Monthly 12** Beacon Art Projects, Lincoln
Gestures of Resistance AHRA 2012 9th International Conference
- 2011 **Walking Through Walls** performative lecture PSI#17 Utrecht - Camillo 2.0
- 2010 **Routine Procedures** Sexuate Subjects, interdisciplinary event UCL, London
Urban (col)laboratory with Diana Wesser, Metropolis Lab, Copenhagen (DK)
- 2009 **Not Building** Škuc Gallery, Ljubljana (SI)
Mechanical Operations in Cambourne book launch with Lawrence Bradby, ICA London
- 2007 **Form Trans Inform:** with Doina Petrescu, Sheffield University, Alternate Currents Symposium

Residencies / Research Projects / Professional Development

- 2021-22 **Sheffield Hallam University, Department of Architecture**
Research Associate on BA research project: This Is Not a Park: Hybridising Urban Infrastructures
- 2019 **Real Estate Micro Residency** Leftcoast Blackpool
- 2018-20 **Between the Gallery and the Park** Yorkshire Sculpture Park and Furtherfield Gallery
- 2018 **Transitions17** Saabat Gallery, Middlesbrough
- 2017-18 **Walk & Play YSP!** Yorkshire Sculpture Park with Idit Nathan
The Remote Lab Fermynwoods Contemporary Art, Northamptonshire
- 2016-17 **Fantastical Cambridgeshire** Cambridge Curiosity and Imagination
- 2016 **The Drawing Room** 3-day residency, Oriel Davies Gallery, Newtown, Wales
- 2015-16 **Play the City Now or Never! METAL** 2 year residency METAL with Idit Nathan
- 2016 **UNIT(e) g39** 10 week development residency/intensive g39 Cardiff Wales
- 2015 **How to Re-Make A City** residency with demolition workers, Sheffield, Yorkshire Artspace
MSB2015 three-part residency exchange: Castlefield Manchester, Bloc Sheffield, ESP Birmingham
- 2014 **AA2A** 8 month residency, Sheffield Hallam University
- 2013 **Time & Space METAL** 1 month residency Peterborough with Idit Nathan
Birdland is Everywhere - 6 month residency - Poly-Technic, Soar Works, Sheffield
AIR Celeia - 2 month residency - The Centre for Contemporary Art, Celje Slovenia
METAL Culture Lab, Peterborough, 1 week residency with Idit Nathan
- 2012 **A Day With A Duck** - 6-month residency and gallery presentation, Babylon Gallery, Ely
- 2012 **Mentoring Session** - with Caroline Wright, New Work Network
- 2011-12 **Performative Architectures** - ACE funded practice development via Escalator Live Art
- 2007-12 **taking place 6:** The Other Side of Waiting: Routine Procedures curated public arts project, Homerton Hospital Hackney, London, www.takingplace.org.uk
- 2009-2015 **Studio Artist** Wysing Arts Centre, Cambridge
- 2009 **Communiti es Under Construction** 6-month residency, Wysing Arts Centre, Cambridge

Selected Publications

- Books** 2018 **The Day Of The Duck** with Lawrence Bradby, Marmalade London
2009 **Mechanical Operations in Cambourne** with Lawrence Bradby, Marmalade London
- Chapters** 2023 forthcoming 'Market Meditations' in Fariman, M. A., Lee, C. and Mehan, A. (eds) City, Public Space and Body. London: Routledge.
- 2022 **A Day with a Duck in Infrastructural Love Caring for Our Architectural Support Systems** Hélène Frichot, Adrià Carbonell, Hannes Frykholm, Sepideh Karami eds. Basel: Birkhäuser.
- 2021 **Collective Performing in Movement for Public Speech** Polonca Lovšin ed. Ljubljana: Museum and Galleries of City of Ljubljana).
- 2016 **Market Meditations in Demystifying Architectural Research** Flora Samuel and Anne Dye eds. RIBA Publishing
- 2010 **In Between House and Home** in Verhaktene Beredsamkeit? Politik, Pathos und Philosophie der Geste, Veronika Darian ed., Peter Lang, Frankfurt am Main.
- 2007 **Micro-Strategies** in Altering Practices: Feminist Politics and Poetics of Space Doina Petrescu ed., Routledge, London
- 2006 **Unpleasant Matters** in Material Matters: Materiality in Contemporary Architectural Practice and Theory Katie Lloyd-Thomas ed., Routledge, London

- Articles** 2017 **Was (is) taking place a nomadic practice?** with Teresa Hoskyns in Architecture Feminisms Theory & Culture journal issue 5 2017
- 2008 **Form Trans Inform: the 'poetic 'resistance in architecture** with Doina Petrescu and Constantin Petcou, ARQ Vol. 12/2
- 2002 **Micro-Strategies of Resistance** RFR Journal of Feminist Research, Fall/Winter
- 2001 **Enclaves Of Expression:** Journal of Architectural Education MIT (Los Angeles)
- Pages** 2016 **A Dialogue between Art & Protest**, PLANK Technique of Art & Protest Zine
- 2015 **Play The City Now Or Never!** in Ways to Wander Claire Hind & Clare Qualmann Triarchy Press
- 2013 **U-Spy Deterrent Survey** in Paper Stages book www.paperstages.co.uk
- Believers walk right in and take your seat** in Artists Cookbook, New Work Network
- Walking Through Walls** in publication of the festival 'play!LEIPZIG (Dance Archive Leipzig)
- Fissures in the Harbour of Knowledge** (Ed. Ruhr University Bochum)
- 2010 **Mechanical Operations: Repetitive Actions as a Creative Force in New English Settlements** in Surface, YH485 Press, www.YH485press.org with Lawrence Bradby
- 2008 **In Between House and Home "A question(ing) of gesture"** Fotohof edition catalogue

Teaching, Consultancy, Workshops, Professional architectural practice

- current** **Senior Lecturer in Architecture** Sheffield Hallam University (0.6FTE)
- 2018 **Writing Practice workshop** Oslo National Academy for the Arts Norway
- Organisational Diagrams For Everyday Lives Of Socially Engaged Artists** Social Art Summit Sheffield Site Gallery
- How is Public Space Performed?** Workshop Floating University Berlin for Raumlabor
- Wild Learning: Alterlives** workshop for Fermynwoods Contemporary Art
- 2017/18 **Design Tutor PGT MA in Urban Design and MA in Architectural Design** Sheffield School of Architecture
- 2016-2020 **External Examiner - Edinburgh Edinburgh School of Architecture & Landscape Architecture** MSc in Architectural and Urban Design
- 2016 **Oslo National Academy for the Arts** Norway, 'Hands On' MA in Art and Public Space
- Smiths Row** Bury St Edmunds - consultant artist for studio development
- 2013-2015 **Design Tutor - Studio Tutor, MArch / PGT MA Architecture & Urban Design** Sheffield School of Architecture
- 2013 - 2018 **Cambridge Curiosity and Imagination** Trustee www.cambridgecandi.org.uk
- 2005-2014 **MOLE Architects Ltd. Ely (part-time)** Architect
- 2012-13 **Children Take The Lead** with Cambridge Curiosity and Imagination
- 2011 **Wysing Arts Centre** Young Artists Retreat Workshop with artist Rachael Barker, **Kettles Yard Cambridge** Contemporary Art Family Workshops, Kettles Yard, Cambridge
- 2008 **Arts Council England (ACE) Creative Partnerships** Enquiry Schools commission with artists Townley & Bradby, Bradfield Primary School, Manningtree
- 2007 **ACE Creative Partnerships** From Little Seeds: commission with artist Sally Brown, Leicester Imperial Avenue Infants and Leicester City Gallery
- 2006 **General Public Agency**, London, Creative Consultant: Aldegate Public Realm Strategy,
- 2005/6 **ACE Creative Partnerships** Creative Constructions, Ravenscroft Infants, Clacton On Sea
- Shape East/Arts Council England Creative Partnerships** Talk about Tomorrow: commission, with artist Sally Brown, Spring Meadow Primary School, Harwich
- 2003/04 **Cambridge/Tate Modern**, Inspirer: Immersive Learning Project, www.accessart.org.uk.
- 1999/00 **Winchester School of Art** lecturer 'Architecture and Society ' BA Visual Arts
- 1999 - 2004 **5th Studio Architects Cambridge (part-time)** Architect

Prizes/Grants/Awards

- 2018 - 20 **Arts Council England ACE: Project Grant:** Between the Gallery and the Park, with Idit Nathan
- 2015/16 **ACE: Grants for the Arts award:** with Idit Nathan for Play The City Now Or Never!
- Yorkshire Artspace Microgrant:** Flora and Fauna Tours, Castlegate, and Open Studios Sheffield
- 2014 **ACE/British Council: Artists International Development Fund** Round 6
- 2013 **RIBA LKE Ozolins PhD Studentship**
- A-N Critical Writing Bursary** to review b-side Festival Portland UK
- A-N Go & See Venice Biennale Bursary**
- ACE selected Escalator Digital Arts artist** (METAL Culture Lab)
- 2012 **University of Sheffield Faculty of Social Sciences PhD Fees Scholarship**
- ACE Grants for the Arts award:** A Day With a Duck, Babylon Gallery, Ely
- 2011 **ACE selected Escalator Live Art artist, ACE practice development Grants for the Arts.**
- 2010 **ACE selected Escalator Visual artist**
- 2008 **ACE Grants for the Arts award:** with taking place for The Other Side of Waiting (TOSOW)
- 2007 **ACE Grants for the Arts Research & Development:** with taking place for TOSOW